

---

# Supporter/Exhibitor Prospectus

**VIS 2015**  
**ieeevis.org**

IEEE Visual Analytics Science & Technology Conference (VAST)  
IEEE Information Visualization Conference (InfoVis)  
IEEE Scientific Visualization Conference (SciVis)

## **Co-located Symposia & Workshops**

IEEE Symposium on Large-Scale Data Analysis and Visualization (LDAV)  
[ldav.org](http://ldav.org)

IEEE Symposium on Visualization for Cyber Security (VizSec)  
[www.vizsec.org](http://www.vizsec.org)

IEEE VAST Challenge Workshop  
[www.vacommunity.org](http://www.vacommunity.org)

Palmer House Hilton  
Chicago, Illinois

Conference Dates  
25-30 October 2015

Exhibit Dates  
27-29 October 2015

IEEE VIS 2015 provides the premier forum for advances in scientific and information visualization in academia, science, government, and industry. Three events, the IEEE Conference for Visual Analytics for Science and Technology (VAST), the IEEE Information Visualization Conference (InfoVis), and the IEEE Scientific Visualization Conference (SciVis) will be jointly held at the Palmer House Hilton from Sunday, October 25 through Friday, October 30, 2015. These events bring together researchers and practitioners in the visualization field with a shared interest in tools, techniques, and technology. A full complement of research presentations, tutorials, workshops, panels, demonstrations, posters, and exhibitions make this conference one of the largest and most important gatherings of researchers and professionals who specialize in the visual analysis of data.

Co-located with the conference will be three IEEE Symposiums and Workshops:

The Symposium on Large-Scale Data Analysis and Visualization (LDAV) brings together domain scientists, data analytics and visualization researchers, High-Performance Computing (HPC) specialists, and database technology providers, fostering innovative solutions to the unique problems encountered with extremely large scale data.

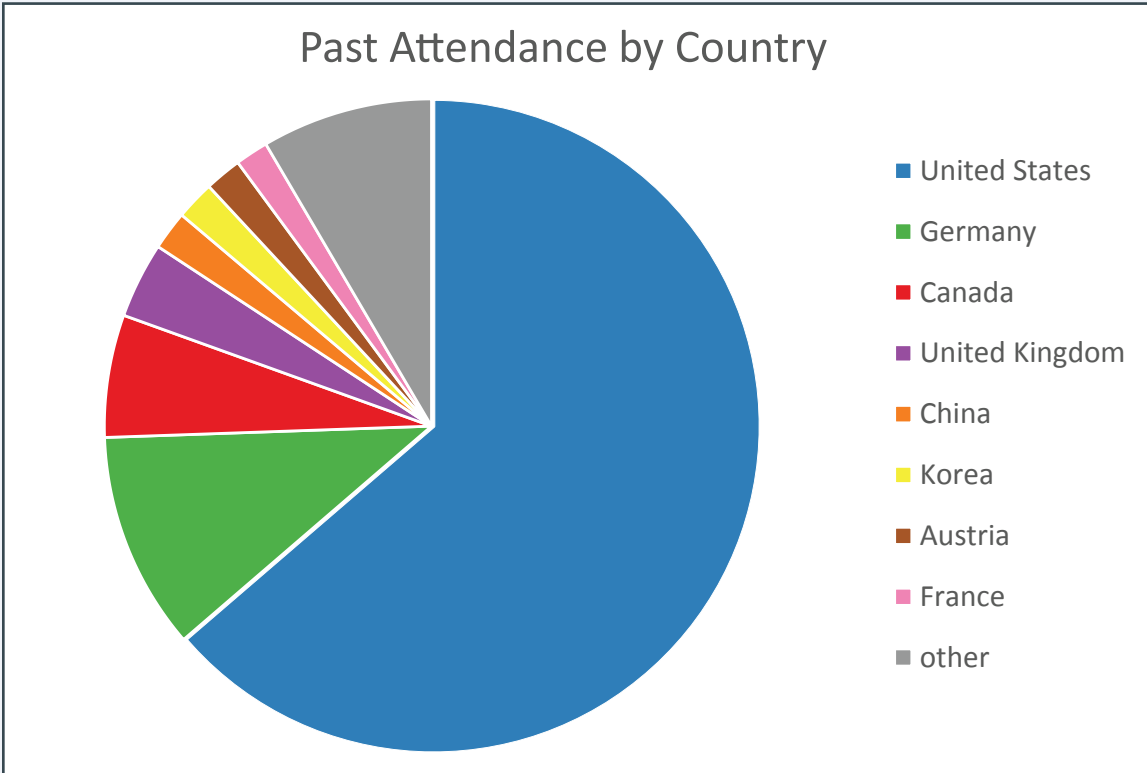
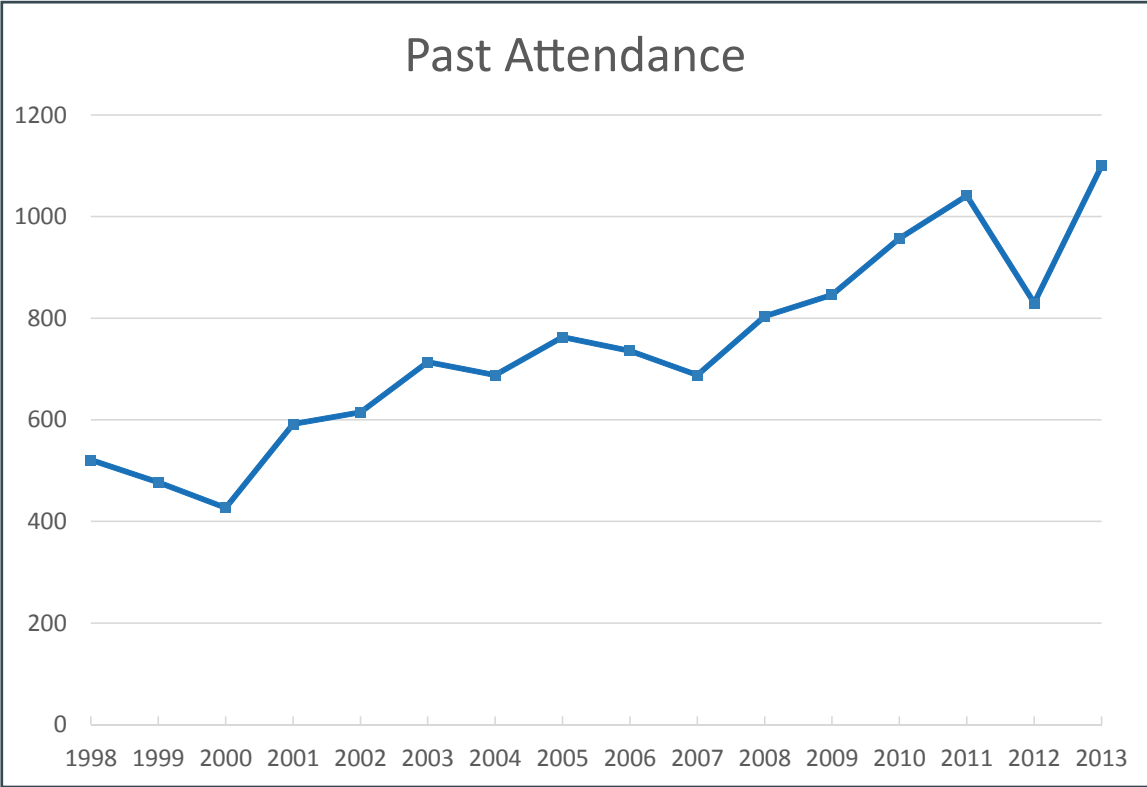
The Visualization for Cyber Security Workshop (VizSec) brings together researchers and practitioners in information visualization and security to address the specific needs of the cyber-security community through new and insightful visualization techniques.

The VAST Contest Workshop showcases and discusses the best tools and methods in the domain of visual analytics. The contest provides realistic problems and datasets of varying complexity, aimed at allowing students, researchers, practitioners, and industry to benchmark their tools in a replicated way.

We invite you to participate in the support of IEEE VIS 2015 by contributing to or exhibiting at the conference.

### **Why Support and Exhibit at IEEE VIS 2015**

- Meet over 1,000 conference participants – potential customers and collaborators – leading researchers from government, industry, and academia from around the world that specialize in visual data representation and analysis.
- Increase visibility among conference attendees with an exhibition. The 2015 exhibits will be held in the main conference atrium in high traffic areas to maximize the interaction between exhibitors and attendees. An exhibit gives the opportunity to promote your company through print, presentation, media, and personal contact.
- In addition to weeklong exhibit space, silver supporters and above will have a 20-minute slot to present their technologies and research in the official conference industry track.
- Promote your company in the official conference materials. Your company name, logo, and website will be included in the conference proceedings, final program, and conference website.
- Receive complimentary or reduced conference registrations enabling your company to reach potential customers and recruit potential candidates.
- Gain first hand access to highly talented and skilled individuals for recruitment into your product development and research teams. Many of the paper presenters are job seeking senior doctoral candidates and post-doctoral research fellows. An interview room will be available.





Level of Support

# **DIAMOND**

# **\$15,000**

# **or greater**

- Five (5) complimentary full-week registrations (includes reception and banquet tickets).
- Company name, logo, and URL will be listed as a Diamond supporter in all conference announcements, the advance program, and the conference website maintained at <http://ieevis.org>.
- Acknowledgement of your company's contribution and offer of thanks at the opening and closing sessions of the conference.
  - Complimentary exhibition space size of 4 exhibition units.
    - Enhanced signage throughout the conference directing attendees to your exhibit.
- Opportunity to be the named supporter of the evening awards banquet, which will be determined on a first-come, first-served basis.
- A 20-minute time slot to present company technology & research in the official industry track.
  - Direct point-of-contact and coordination with the Exhibitors Chairs for your exhibit.

**Each exhibition unit includes:**

10 feet x 6 feet (3 meters x 2 meters) floor space

One (1) table and two (2) chairs

One (1) 500-Watt electrical outlet (upon request, subject to availability)

Wireless Internet access



Level of Support

# TITANIUM

## \$12,000

- Four (4) complimentary full-week registrations (includes reception and banquet tickets).
- Company name logo, and URL will be listed as a Titanium supporter in all conference announcements, the advance program, and the conference website maintained at <http://ieevis.org>.
- Acknowledgement of your company's contribution and offer of thanks at the opening and closing sessions of the conference.
  - Complimentary exhibition space size of 3 exhibition units.
  - Enhanced signage throughout the conference directing attendees to your exhibit.
- Opportunity to be the named supporter of an evening reception, which will be determined on a first-come, first-served basis.
- A 20-minute time slot to present company technology & research in the official industry track.
  - Direct point-of-contact and coordination with the Exhibitors Chairs for your exhibit.

**Each exhibition unit includes:**

10 feet x 6 feet (3 meters x 2 meters) floor space

One (1) table and two (2) chairs

One (1) 500-Watt electrical outlet (upon request, subject to availability)

Wireless Internet access



Level of Support

# PLATINUM

## \$9,000

- Three (3) complimentary full-week registrations (includes reception and banquet tickets).
- Company name, logo, and URL will be listed as a Platinum supporter in all conference announcements, the advance program, and the conference website maintained at <http://www.ieeevis.org>.
- Acknowledgement of your company's contribution and offer of thanks at the opening and closing sessions of the conference.
- Complimentary exhibition space size of 2 exhibition units.
- Opportunity to be the named supporter of a morning or afternoon break, which will be determined on a first-come, first-served basis.
- A 20-minute time slot to present company technology & research in the official industry track.
- Direct point-of-contact and coordination with the Exhibitors Chairs for your exhibit.

**Each exhibition unit includes:**

10 feet x 6 feet (3 meters x 2 meters) floor space

One (1) table and two (2) chairs

One (1) 500-Watt electrical outlet (upon request, subject to availability)

Wireless Internet access



Level of Support

# **GOLD**

# **\$6,000**

- Two (2) complimentary full-week registrations (includes reception and banquet tickets).
- Company name, logo, and URL will be listed as a Gold supporter in all conference announcements, the advance program, and the conference website maintained at <http://www.ieeevis.org>.
- Acknowledgement of your company 's contribution and offer of thanks at the opening and closing sessions of the conference.
  - Complimentary exhibition space size of 2 exhibition units.
- Opportunity to be the named supporter of a Charging Station & Email Lounge, which will be determined on a first-come, first-served basis.
- Direct point-of-contact and coordination with the Exhibitors Chairs for your exhibit.

**Each exhibition unit includes:**

10 feet x 6 feet (3 meters x 2 meters) floor space

One (1) table and two (2) chairs

One (1) 500-Watt electrical outlet (upon request, subject to availability)

Wireless Internet access



Level of Support

# SILVER

# \$3,000

- One (1) complimentary full-week registration (includes reception and banquet tickets).
- Company name, logo, and URL will be listed as a Silver supporter in all conference announcements, on the advance program, and the conference website maintained at <http://www.ieeevis.org>.
- Acknowledgement of your company's contribution and offer of thanks at the opening and closing sessions of the conference.
- Complimentary exhibition space size of 1 exhibition unit.
  - Direct point-of-contact and coordination with the Exhibitors Chairs for your exhibit.

**Each exhibition unit includes:**

10 feet x 6 feet (3 meters x 2 meters) floor space

One (1) table and two (2) chairs

One (1) 500-Watt electrical outlet (upon request, subject to availability)

Wireless Internet access





Level of Support

# BRONZE

# \$1,000

- Reduced full-week registrations (includes reception and banquet tickets).
- Company name, logo, and URL will be listed as a Bronze supporter in all conference announcements, the advance program, and the conference website maintained at <http://www.ieeevis.org>.
- Complimentary exhibition space size of 1 exhibition unit.
- Direct point-of-contact and coordination with the Exhibitors Co-Chairs for your exhibit.

**Each exhibition unit includes:**

- 10 feet x 6 feet (3 meters x 2 meters) floor space
- One (1) table and two (2) chairs
- One (1) 500-Watt electrical outlet (upon request, subject to availability)
- Wireless Internet access



Level of Support

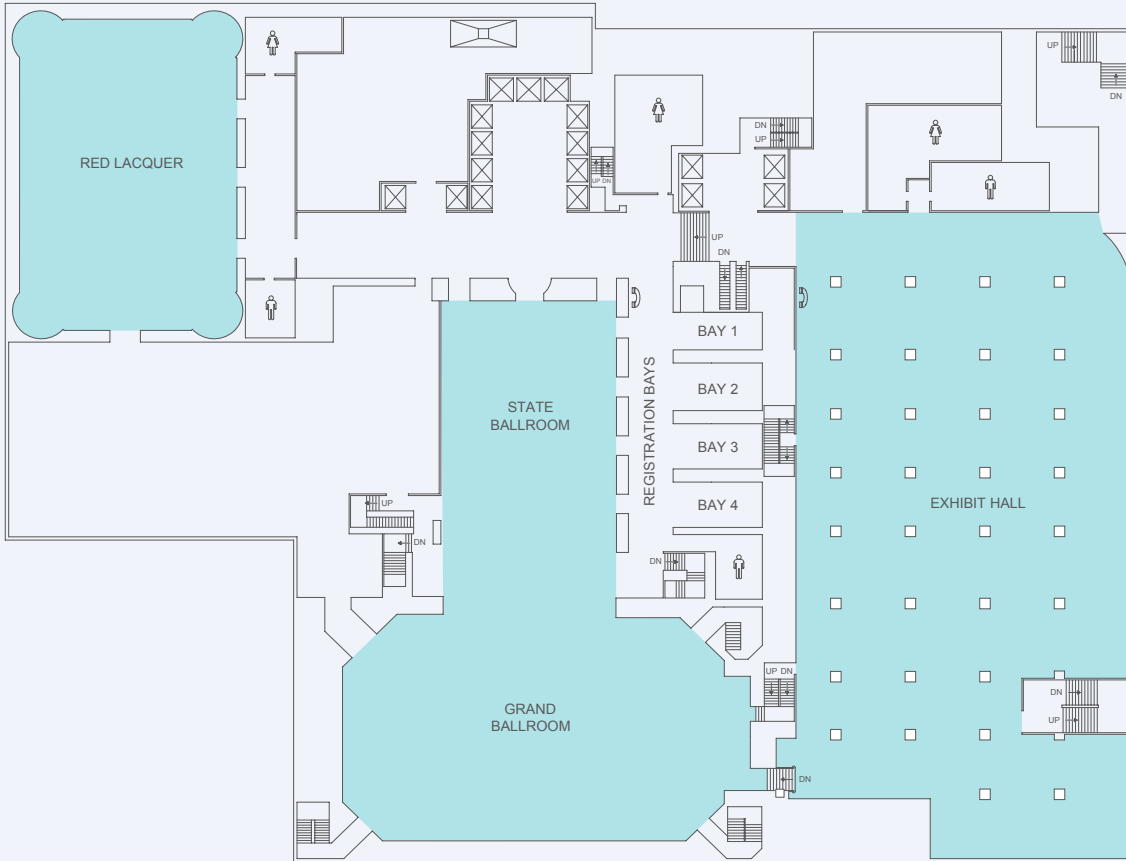
# **NON-PROFIT/ PUBLISHER/ ACADEMIC \$500**

- Reduced full-week registrations  
(includes reception and banquet tickets).
- Complimentary exhibition space size of 1 exhibition unit.
  - Direct point-of-contact and coordination with the Exhibitors Chairs for your exhibit.

**Each exhibition unit includes:**

10 feet x 6 feet (3 meters x 2 meters) floor space  
One (1) table and two (2) chairs  
One (1) 500-Watt electrical outlet (upon request, subject to availability)  
Wireless Internet access

# FOURTH floor



| Fourth Floor         | Dimensions (l x w) | Square Feet <sup>◇</sup> | Ceiling Height | Theater | Schoolroom 26' | Schoolroom 36' | Banquet | Reception * | Conference |
|----------------------|--------------------|--------------------------|----------------|---------|----------------|----------------|---------|-------------|------------|
| Grand Ballroom       | 70' x 121'         | 9,248'                   | 29'            | 1,000   | 400            | 600            | 800     | 1,119       | N.A.       |
| Ballroom Balcony     | N.A.               | 2,266'                   | N.A.           | 120     | 30             | 45             | 80      | 126         | N.A.       |
| State Ballroom       | 73' x 47'          | 3,617'                   | 29'            | 380     | 132            | 198            | 260     | 408         | N.A.       |
| Grand/State Ballroom | 168' x 121'        | 12,865'                  | 29'            | 1,500   | 500            | 750            | 1,200   | 1,653       | N.A.       |
| Red Lacquer          | 84' x 98'          | 7,133'                   | 21'            | 500     | 240            | 360            | 450     | 688         | N.A.       |
| Exhibit Hall         | 114' x 199'        | 16,909'                  | 9'2"           | N.A.    | N.A.           | N.A.           | N.A.    | N.A.        | N.A.       |

<sup>◇</sup> Usable square footage  
 \* Capacities take into consideration placement of bars, cocktail rounds, food stations, and experience of hotel

For more information, visit:  
<http://www.palmerhousehiltonhotel.com/meetings-events/tools/floorplans/>

## Conference Deadlines

### Friday, July 31, 2015

- Deadline for Supporter/Exhibitor Application and Full Payment
- Applications received after July 31, 2015 will be accepted subject to availability.

### Wednesday, September 15, 2015

- Exhibitor space assignments will be e-mailed.
- Deadline for company logo to appear in printed materials (high-quality vector-based image file).

### Thursday, October 22, 2015

- Earliest date that exhibit materials can arrive at the Palmer House Hilton.

## Contact Information

### IEEE VIS 2015 Exhibit Contacts

Allen Sanderson, Exhibits Co-Chair  
Scientific Computing and Imaging  
Institute  
exhibits@ieevis.org

Tobias Isenberg, Exhibits Co-Chair  
INRIA, Paris - Rocquencourt  
exhibits@ieevis.org

David Gotz, Exhibits Co-Chair  
University of North Carolina at  
Chapel Hill  
exhibits@ieevis.org

### IEEE VIS 2015 Conference Contacts

Michael E. Papka, General Chair  
Argonne National Laboratory and  
Northern Illinois University  
vis15@anl.gov

Maxine Brown, General Chair  
University of Illinois at Chicago  
vis15@anl.gov

Laura Wolf, Coordinating Chair  
Argonne National Laboratory  
vis15@anl.gov

## Administrative and Logistical Support

### Monique Rice

Conference Planner  
IEEE Computer Society  
monique.rice@computer.org

## Contractual Considerations

### Purpose

The purpose of all exhibits is to inform meeting participants of the type and nature of products related to scientific, medical, and information visualization and to provide information and explanation concerning related products and services. Appropriate product demonstrations and visuals can be used towards the stated purpose.

### Space Assignments

The following rules and regulations governing the exhibit under the auspices of IEEE VIS 2015 are part of the application for space and constitute a contract between the Exhibitor and the Conference. They have been formulated in the best interest of the Exhibitor and full cooperation of the Exhibitor in their observance is asked. Any detail not specified is subject to decision by the Chairperson of the Conference. Each assignment of space also entails benefits from the conference. The actual nature of the benefits depends on the support purchased by the Exhibitor (see Levels of Support).

Space will be assigned when the exhibitor has registered and returns a duly completed application along with the payment. The Conference reserves the right to modify the designated exhibit space in the event a change in the original assignment is necessary. The Exhibitor agrees to accept the space assigned. Exhibit space will be assigned based on the date the application is received.

### Terms of Payment

Full payment MUST accompany the supporter/exhibitor online application. No application will be processed without remittance of full payment. Deadline for initial exhibit space assignments is 25 September 2015. A completed online application for space with full payment and all re-

quested information must be submitted. Submission instructions will be available through the Exhibit Chairs. Payment by credit card for amounts of \$1000 or less can be processed as part of the online application form. Visa, MasterCard, Discover and American Express are accepted.

If offline payment is required, you may select between check and wire transfer in the online payment system after completing your online application. Payment by wire transfer will subject to a \$25 processing fee. Instructions for check and wire transfers will be communicated when the online application is completed. Payment must be received by July 31, 2015.

### Contract for Space

The acceptance of the application by IEEE VIS 2015 and the full payment of conference support constitute a contract. A completed application for space with full payment and all requested information must be submitted by mail or facsimile. Also, a high-resolution corporate logo is needed. Facsimile applications will be received but must be followed by payment by check. Telephone requests will not be honored. Depending on support purchased, exhibitors will be provided one to four exhibition units. An exhibition unit is considered to be 10 feet by 6 feet (3 meters by 2 meters). Other configurations are possible. Contact the Exhibits Chairs for special needs. For each exhibition unit, the Conference will furnish a table and two chairs. Exhibitors will be provided normal access to electrical power (subject to availability), and the wireless internet as available at the hotel. In essence, all ordinary PCs and workstations can be supported with available internet connectivity. The exhibitors should make their own arrangements with the hotel staff for

needs and requirements that exceed the minimum.

### Cancellations

Exhibitors are requested to notify IEEE Conference Management with cancellations. Cancellations are not effective until they have been submitted in writing to the Exhibits Chairs. Space reductions are considered cancellations. It is understood that IEEE VIS 2015 reserves the right, at its option, to reassign a cancelled space.

### Refunds

Promotion of the conference and its supporters is ongoing. Therefore, Conference Support is not refundable.

### Sharing Space

Subletting of space is not permitted.

### Badges and Staffing

A confirmation e-mail will be sent once the submitted support/exhibit application is processed. Names of appropriate staff at the exhibit can be added as needed. Each exhibiting company is limited to five (5) complimentary exhibit-only badges (includes coffee breaks). Exhibit staff wishing to attend the conference technical program, reception(s), and/or the banquet must register for the conference at the reduced early-bird registration fee or purchase reception and/or banquet tickets. Exhibits should be staffed during show hours. Badge exchange between exhibitor representatives is not permissible.

### Operation of Exhibits

Show management reserves the right to restrict exhibits that, because of sound, method of operation, materials, content, or any other reason are deemed objectionable, and also to prohibit or evict any exhibit as a whole.

### **Size of Exhibits**

Exhibits must be arranged so as not to obstruct the view or otherwise interfere with the displays of other Exhibitors. This restriction includes person(s), things, conduct, printed material, noise, or anything that may be objectionable to the exhibit as a whole. In the event of such restriction or eviction, neither IEEE VIS nor the IEEE Computer Society is liable for

any refunds, rentals or other exhibit expenses.

### **Shipping Items to the Conference**

All packages and freight deliveries to the Palmer House Hilton are managed through The UPS Store, which acts as the business center and package service department for the property. To ensure proper pro-

cessing, please address all materials intended for guests as follows: Attn: Guest Name (Hotel Guest) or Guest Name (IEEE VIS 2015 Conference), The Palmer House Hilton, 17 East Monroe St., Chicago, IL 60603. For more information, including billing and handling fees please contact the The UPS Store directly: Phone (312)917-1705 Fax (312)917-1707, Email Store5905@theupsstore.com.

### **Violations**

As a condition for exhibiting, each Exhibitor shall agree to observe all policies. Violators will not be eligible to exhibit at future IEEE VIS Conference meetings.

### **Insurance**

Advise your agent! Insurance on all exhibits is the responsibility of the Exhibitor. The IEEE Computer Society will not assume any responsibility for property loss or damage to personal property, as stated in the section on Limitation of Liability. Exhibitors are advised and encouraged to carry insurance to cover their property against damage and loss and public liability insurance for claims of injury to the person and property of others.

### **Limitation of Liability**

Exhibitor agrees with IEEE that IEEE shall not be liable for any damage or liability of any kind or for any damage or injury to persons or property during the term of this agreement, from any cause whatsoever by reason of use, occupation and enjoyment of exhibit space by Exhibitor or any person thereon with the consent of Exhibitor and that Exhibitor will indemnify and hold harmless IEEE from all liability whatsoever, on account of such damage, or injury, whether or not caused by negligence of or breach of an obligation by Exhibitor or its employees or representative.

### **Catastrophe**

In the event of fire, strikes, or other unavoidable occurrence rendering the exhibit space unfit for use, provisions will be made for the exhibit elsewhere or a proper financial adjustment will be made to the exhibitor.

